

CHOOSING CLOTHES THAT COMPLIMENT

Matching clothes is not an issue that I struggle with, being a bear with a backpack. It's pretty simple for me. But for you, you're going to have to try a little harder if you want to make sure you are not wearing some terrible clothing combination.

FLIP OVER FOR YOUR NEXT CHALLENGE



EARN THIS NUGGET

- Hang up the color guides and use them to start putting clothing combinations together.
- Demonstrate the combinations that you have created to your parents. You may even like to try having your own fashion show.

• Lesson 1. Blue and green should never be seen together, as they say. They are a couple of colors that tend to clash. If we are going to formulate a plan, we're going to need something a little more than that.

• Start with black and white. They are opposites to each other. That makes them complementary colors. They always look good on their own or together.

• Add any color you want to black and white and it'll work. So it's safe.

• Earth colors, like grays and browns, work well together, as do pastels. So those are some good options.

• Now you have some basic guides. Let's introduce you to the color wheel. Colors in the same segment, or pie piece, always work well together. So do complementary colors, which are colors on opposite sides of the wheel. The closer they are to the same distance from the outside of the wheel, the better the complement will be.

• Last, remember it's not all about color, a pastel leotard along with black hiking boots technically will work color wise, but you'll still look ridiculous. Remember to take the style of clothing into consideration too.

Okay, so you have some principles to go by now. And they are a little better than blue and green should never be seen together. See what great combinations you can create.



CHOOSING CLOTHES THAT COMPLIMENT

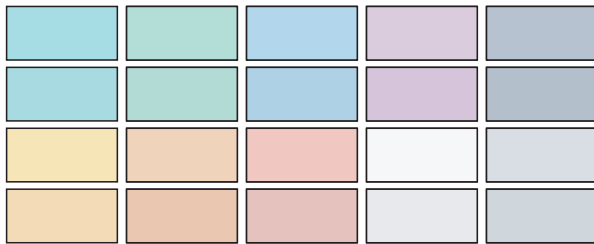


Black

White



Pastel Tones



Earth Tones

