

UNDERSTANDING FAMILY TREES

Family trees are essentially a visual reference to show the relationships with people. There are a lot of people in the world. If you go back far enough they all seem to converge, which sort of makes sense really. So, if you have the records, you can see how everyone is connected with everyone else ... within reason anyway.

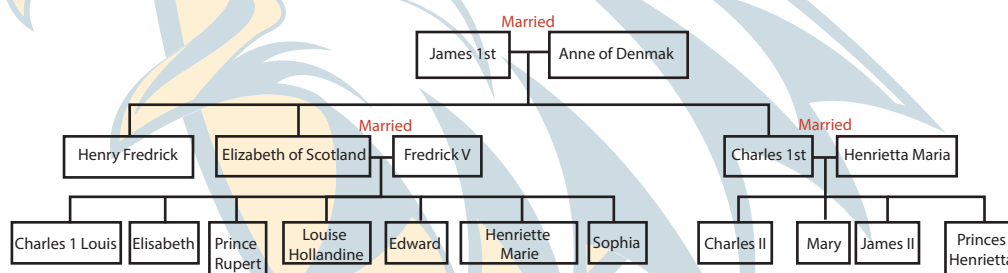
FLIP OVER FOR YOUR NEXT CHALLENGE



EARN THIS NUGGET

Create a family tree starting with yourself and go as far as you can with family knowledge. If possible, talk to grandparents and aunts and uncles about individuals. Then fill in what you can.

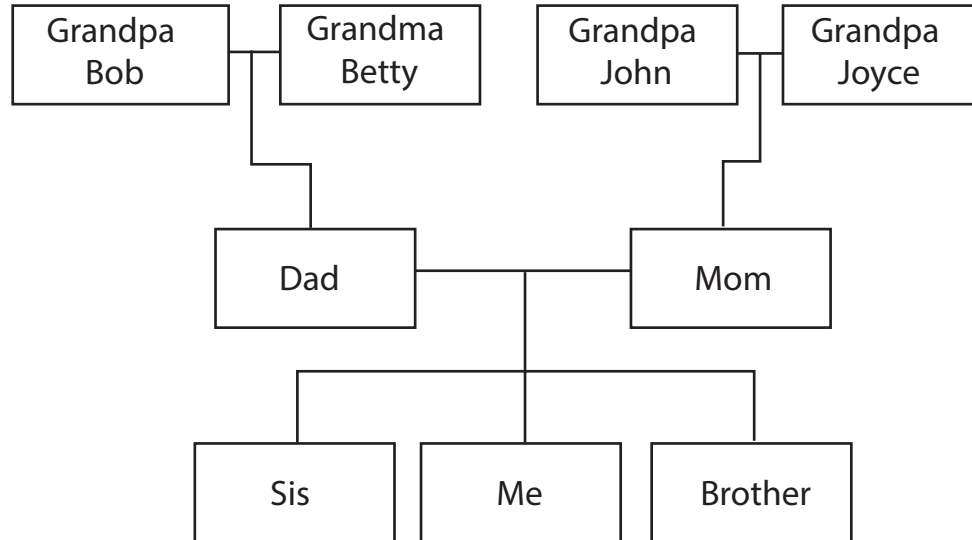
So, when you look at genealogies (family history), there are really two ways to diagram it. It all depends on what you are looking for, or more accurately, who your focus is. Essentially it is a top down approach or a bottom up approach. One will create the family tree branches going up; the other will create an upside down tree. Perhaps we'll consider this the roots.



Let's take King James the First, an English king (and Scottish). We place him and his wife Anne of Denmark at the top of our page. We then have three branches under them for their three children. We can allow the branches to continue to spread out as we trace their children: Henry Fredrick who had no children, Elizabeth of Scotland who appears to have had seven children, and Charles the First who had four children before being rudely beheaded. And as we go on, the tree is getting bigger and bigger. Usually, out of necessity, you focus on the family area that you have interest in.

UNDERSTANDING FAMILY TREES

The reverse of this is to start at the bottom. Let's start with you. Who are your parents? Now we are branching out with two people. Who were their parents? Now we have four. Who were their parents (your great-grandparents)? Now we have eight. You can also add the siblings of these relatives, filling out the families, and then add their children.



Again, you can take this as far as you want and really fill out your family tree.

